



**Australian Hammer Supplies Hire**  
Unit 3/32 Williamson Road  
Ingleburn  
NSW 2565

## CATERPILLAR 320 2D

### Major Service

● 0 ● 0 ● 0 ● 0

Inspection Number RP049155

Customer No

Serial Number YCP20067

Customer Name

Make CATERPILLAR

Customer Email

Model CAT320

Works Order RP049155

Equipment Family 17.1-22.5T HYDRAULIC EXCAVATOR

Completed On 1/09/2025 2:17:23 PM

Asset ID AHS78

Inspector Collin Graham

Location AUSTRALIAN HAMMER SUPPLIES HIRE  
Unit 3/32 WILLIAMSON RD  
INGLEBURN  
2565

PDF Generated On 01/09/2025

Machine Hours 4968

Next Meter 5025

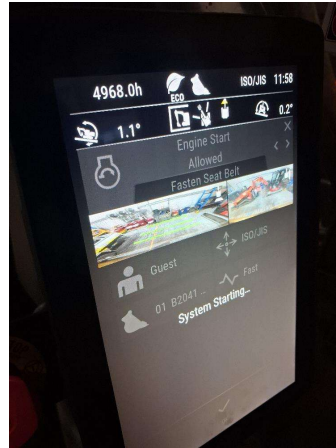
Customer

<input type="radio"/>	Change inner air filter	yes
<input type="radio"/>	Change hydraulic return filter	yes
<input type="radio"/>	Change hydraulic suction filter	yes
<input type="radio"/>	Change hydraulic pilot filter	yes
<input type="radio"/>	Take hydrulic oil sample	yes
<input type="radio"/>	Change hydraulic oil (litres used)	160
<input type="radio"/>	Change engine oil (litres used)	25

### General Info & Comments

● General Info/Comments

carry out 5000hr service. assisted Jake in completion.i replaced adblu injector,finalised all levels, verified operation,replaced crankcase breather filter



● General Info/Comments

46909b2b-6735-4a17-93ee-1545d68eeebd.jpg

● General Info/Comments	c64e5d9b-c65d-4a4d-a8e2-4ea3413b95a6.jpg
-------------------------	--

● Machine Hours	4968
● Next Service Due Hours	5250

## TASK SAFETY INSTRUCTIONS

● 1.1 Wear Correct PPE at all times	PASS
● 1.2 All isolation and safe work procedures must be followed	PASS
● 1.3 Identify task hazards and controls utilising hierarchy or controls model	PASS
● 1.4 Ensure a competent operator and spotter is utilised to move mobile equipment	PASS
● 1.5 Ensure all mobile equipment is fundamentally stable	PASS
● 1.6 Ensure three points of contact is maintained during access and egress	PASS
● 1.7 Ensure acceptable housekeeping standards are maintained at all times	PASS

## MACHINE GENERAL RUNNINGCHECKS

● 2.1 Check all work lights, beacon & reverse alarmfor operation	PASS
● 2.2 Test all dash warning lights, gauges and audible alarms for correct operation	PASS
● 2.3 Check idle timer for correct shut down operation	PASS
● 2.4 Check operation of all three emergency stop buttons	PASS

● 2.5 Check operation of horn	PASS
● 2.6 Check operation of reverse camera	PASS
● 2.7 Check alternator charge voltage	PASS
● 2.8 Check operation of auto grease systemby manually activating timer	N/A
● 2.9 Check fire systemcontrol panel for 'Normal'	N/A

## PM FIRE SUPPRESSION SYSTEM

● 5.1 Ensure fire suppression bottle and components are securely mounted and in good condition	N/A
● 5.2 Ensure fire suppression is correctly charged	N/A
● 5.3 Inspect last charge date	DATE:2025-09-01T00:00:00.0000000
● 5.4 Check all fire extinguishers are securely mounted and in good condition	PASS
● 5.5 Check all fire extinguishers are correctly charged	PASS
● 5.6 Inspect last charge date	DATE:2025-09-01T00:00:00.0000000

## PM ENGINE

● 6.1 Performengine valve set	N/A
● 6.2 Inspect air intake systemhoses, pipes, clamps for signs of dirt ingress	PASS
● 6.3 Inspect engine for oil or fuel leaks	PASS
● 6.4 Inspect engine components for missing clamps	PASS
● 6.5 Inspect exhaust systemfor signs of leaks, loose bolts or missing clamps	PASS
● 6.6 Inspect turbo for security and signs of leaks	PASS
● 6.7 Inspect condition of exhaust lagging	PASS
● 6.8 Inspect engine mounts for condition and loose hardware	PASS

● 6.9 Inspect alternator mount condition and adjustment	PASS
---	------

● 6.10 Inspect wiring condition and security	PASS
--	------

● 6.11 Inspect engine belts	PASS
-----------------------------	------

## PM ENGINE COOLINGSYSTEM

● 7.1 Check coolant level	PASS
---------------------------	------

● 7.2 Check condition of radiator cap	PASS
---------------------------------------	------

● 7.3 Check condition of radiator core	PASS
--	------

● 7.4 Check cooling systemfor signs of leaks	PASS
--	------

● 7.5 Check hose and clamp condition	PASS
--------------------------------------	------

● 7.6 Inspect fan condition and operation	PASS
---	------

● 7.7 Inspect radiator and fan guard condition	PASS
--	------

## PM SWINGTRANSMISSION

● 8.1 Inspect swing transmission for signs of leaks	PASS
---	------

● 8.2 Inspect swing transmission oil level	PASS
--	------

## PM HYDRAULIC SYSTEM

● 9.1 Check hydraulic oil level	PASS
---------------------------------	------

● 9.2 Inspect hydraulic cylinders for leaks and security	PASS
--	------

● 9.3 Inspect hydraulic hoses for leaks, damage, security	PASS
---	------

● 9.4 Inspect hydraulic pump condition, leaks, security	PASS
---	------

● 9.5 Check Pilot Accumulator operation as per OEM Maintenance Procedure - Test Boom Down Functionality with engine off	PASS
---	------

## PM FINAL DRIVES

● 10.1 Inspect LHS final drive mount condition for leaks and security	PASS
---	------

● 10.2 Inspect LHS oil level and mag plug condition	PASS
---	------

● 10.3 Inspect RHS final drive mount condition for leaks and security	PASS
---	------

● 10.4 Inspect RHS oil level and mag plug condition	PASS
---	------

## PM UNDERCARRIAGE

● 11.1 Inspect LHS track tension	PASS
----------------------------------	------

● 11.2 Inspect RHS track tension	PASS
----------------------------------	------

● 11.3 Inspect tracks for loose/missing bolts	PASS
---	------

● 11.4 Inspect load and carrier rollers for signs of leaks	PASS
--	------

● 11.5 Inspect idlers for signs of leaks	PASS
--	------

● 11.6 Inspect sprocket segments condition	PASS
--	------

● 11.7 Inspect track frame for cracks, lose or missing hardware	PASS
---	------

## PM FRAME AND BODY

● 12.1 Check panels for damage and security	PASS
---	------

● 12.2 Check access steps and walkway condition	PASS
---	------

● 12.3 Inspect boom condition – cracks, missing clamps, damaged pipes, excessive movement, lubrication	PASS
--	------

● 12.4 Inspect stick condition – cracks, missing clamps, damaged pipes, excessive movement, lubrication	PASS
---	------

● 12.5 Inspect quick hitch condition and operation	PASS
--	------

● 12.6 Inspect bucket condition – cracks, wear, damage, mounts	PASS
--	------

● 12.7 Inspect GET condition and hardware	N/A
---	-----

## PM ELECTRICAL SYSTEM

● 13.1 Check battery condition	PASS
--------------------------------	------

● 13.2 Check battery terminal condition	PASS
---	------

● 13.3 Check battery security	PASS
-------------------------------	------

● 13.4 Check battery box drain is clear	PASS
---	------

● 13.5 Check wiring condition and security	PASS
--	------

## PM GREASE SYSTEM

● 14.1 Check all points for acceptable lubrication	PASS
--	------

● 14.2 Inspect grease system operation	PASS
--	------

● 14.3 Check grease line condition	PASS
------------------------------------	------

● 14.4 Refill grease tank	N/A
---------------------------	-----

● 14.5 Lubricate bucket linkage	PASS
---------------------------------	------

● 14.6 Lubricate blade linkage	N/A
--------------------------------	-----

● 14.7 Lubricate boom & stick linkage	PASS
---------------------------------------	------

● 14.8 Lubricate swing bearing	PASS
--------------------------------	------

## PM OPERATOR STATION

● 15.1 Check all doors for correct opening and closing adjustments and operation	PASS
--	------

● 15.2 Inspect condition of door seals	PASS
--	------

● 15.3 Check window glass and seal condition	PASS
--	------

● 15.4 Check mirror condition and adjustments	PASS
---	------

● 15.5 Fill window washer reservoir	PASS
-------------------------------------	------

● 15.6 Inspect air con vents condition	PASS
--	------

● 15.7 Inspect seat belt and mounting hardware	PASS
--	------

● 15.8 Inspect seat condition, operation and mounting	PASS
---	------

● 15.9 Replace cabin A/C filter	PASS
---------------------------------	------

## OIL SAMPLING

	16.1 Engine	PASS
--	-------------	------

#### PM POST SERVICE INSPECTION CHECKS

	17.1 All inspections have been completed and rectified as required	PASS
--	--	------

	17.2 All safety related defects have been repaired or reported	PASS
--	--	------

	17.3 All defects have been noted and reported	PASS
--	---	------

	17.4 All fluids are at correct level and drain plugs tight	PASS
--	--	------

	17.5 All oil samples have visually been inspected and any notable signs of contamination have been reported	PASS
--	---	------

	17.6 All replaced filters have been cut and inspected and photos added to CAT Inspect and reported to supervisor	PASS
--	--	------

	17.7 Machine has been recommissioned and ready for operation	PASS
--	--	------

	17.8 PM service notification marked off in Vision Link	PASS
--	--	------

#### DEFECTS IDENTIFIED


	18.1 DEFECTS IDENTIFIED	na
--	-------------------------	----

#### OIL USED

	19.1 Hydraulic oil	160
--	--------------------	-----

	19.2 Engine oil	25
--	-----------------	----

	19.3 Slew oil	18
--	---------------	----

	19.4 Gear oil	18
--	---------------	----

	19.5 Coolant	4
--	--------------	---